

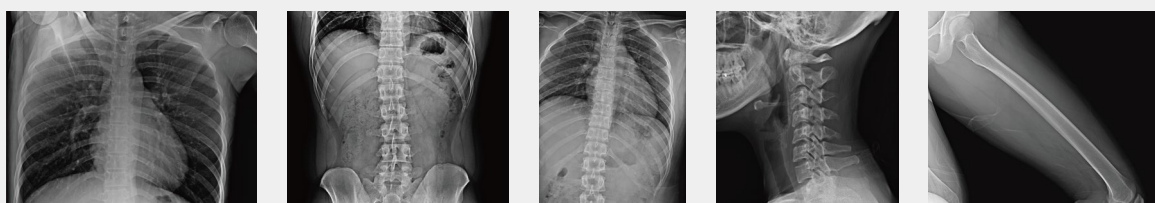


Digital X-ray Detector

| 17HK700G-W | 17HK701G-W | 14HK701G-W |

Superior Image Quality for Diagnostic Confidence

Highly Sensitive CsI AED* Detector with 16bit A/D Conversion (Data Output)



*Auto Exposure Detection

Light yet Durable

IP53: Water Resistance & Dustproof



Solids Level 5

Protected against objects of dust; complete protection against contact.



Liquids Level 3

Protected against spraying water at any angle up to 60° from the vertical shall.

Magnesium & Carbon-fiber Body

With a super strong body that combines carbon-fiber with magnesium, the LG Digital X-ray Detector is not only lightweight but also exceptionally strong.

Product Weight

17HK700G-W	17HK701G-W Including Battery	14HK701G-W Including Battery
3.2kg (7lb)	3.4kg (7.5lb)	2.95kg (6.5lb)

Maximum Load Weight

17HK700G-W & 17HK701G-W 14HK701G-W
Full (Uniform load) 300 kg (661 lb)
Local (Point load) 100 kg (220 lb)

Make More Efficient Workflow

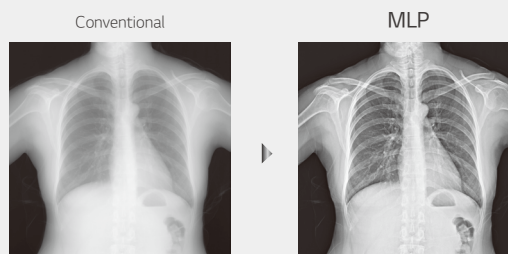
2sec (Wired) & 2.5sec (Wireless) for Full Images (Typ.)

The LG Digital X-ray Detector increases productivity by reducing preview waiting time. Whereas the average waiting time for preview imagery offered by competitors' products is 10 seconds, the LG Digital X-ray Detector provides previews in just 2 seconds for the wired version and 2.5 seconds for the wireless device.

Acquisition Workstation Software(AWS) for LG DXD

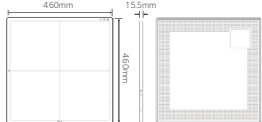
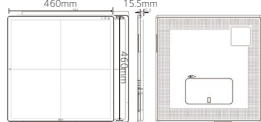
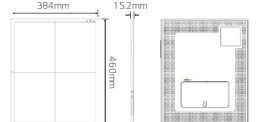
Multi-layer Image Processing (MLP)

Multi-layer image processing embedded in AWS provides well-balanced visualization at each frequency level. Its contrast enhancement processing functions such as detail contrast, sharpen, and de-noise improve tissue visibility within an image.



Specification

Digital X-ray Detector

Model		17HK700G-W (Wired)	17HK701G-W (Wired / Wireless)	14HK701G-W (Wired / Wireless)
Dimension / Weight		460 mm x 460 mm x 15.5 mm	460 mm x 460 mm x 15.5 mm	384 mm x 460 mm x 15.2 mm
				
		3.2 kg	3.4 kg	2.95 kg
Intended Use		General Radiography		
TFT Type		A-Si		
Scintillator		CsI		
Pixel Pitch		140 μm		
Image Area	Number of Pixels	3072 x 3072 pixels	3072 x 3072 pixels	2500 x 3052 pixels
	TFT Active Area	430.08 x 430.08 mm	430.08 x 430.08 mm	350 x 427.28 mm
MTF	MTF @ 0.5lp/mm (Typ.)	89%		
DQE	DQE @ 0.1lp/mm (Typ.)	72%		
A/D Conversion		16 bit		
Data Output		16 bit		
Communication	Type	Wired	Wired / Wireless	Wired / Wireless
	WLAN	-	IEEE802.11a/b/g/n/ac 2.4 GHz / 5 GHz	IEEE802.11a/b/g/n/ac 2.4 GHz / 5 GHz
	Auto Exposure Detection	Yes		
Cycle Time		8 sec	8 sec (Ethernet) / 11 sec (WLAN)	8 sec (Ethernet) / 11 sec (WLAN)
Full Image Transfer (Typ.)		2 sec	2 sec (Wired) / 2.5 sec (Wireless)	2 sec (Wired) / 2.5 sec (Wireless)
Durability	Maximum Load Weight	Full (Uniform Load) : 300 kg, 661 lb Local (Point Load) : 100 kg, 220 lb		
	Watertightness	IP53		
	Sensor Protection Plate	Carbon Fiber Plate		
Battery	Operation Time	-	(Typ.) 240 shots / 6.0 hrs (Condition : Interval Time 90 sec)	(Typ.) 260 shots / 6.5 hrs (Condition : Interval Time 90 sec)
	Duration in Standby Status (Typ.)	-	13 hrs	13 hrs
	Charging Time	-	3 hrs	3 hrs
Accessories	Cable	Power Cord, Main Cable 7 m (LAN Cable, Sync Cable Option)		
	Other	-	Battery Charger	
		-	Bundle Battery	
			Control Box	

Acquisition Workstation Software

Installation Requirement	OS	Microsoft Windows 7, 10 (64 bit)
	DB	MariaDB
	Processor Options	Intel CPU Desk 6th gen i7 or above
	RAM	8 GB
	HDD	2 TB



LG Electronics Inc.

<http://www.lge.com/global/business>

Copyright © 2020 LG Electronics. All Rights Reserved.